

## Shooter Classification

David Rhoads, ATA Delegate

Any shooter with no average card will be classified as follows:

- >Adult male, not less than class B and not less than 20 yards.
- >Adult female, not less than class C and not less than 19 yards.
- >Male junior, not less than class C and not less than 20 yards.
- >Sub junior, not less than class C and not less than 19 yards.
- >KTA management reserves the right to add penalty yardage to shooters with less than 1500 handicap targets combined in the current and previous 2 years.
- >Shooters with less than 500 targets on current year's score card will be classified on the previous year's average if more targets were shot the previous year. If the total of the two years is less than 500 targets, the rule for shooters with no score card will apply unless the scores indicate that a higher class should be used.
- >Shooters with 500 to 1000 targets on the current year's card will be classified by the last 1000 targets if they show a definite trend either up or down from the total for the year. Any unusually low scores will be disregarded in computing averages.
- >In all cases not covered by the above rules, ATA rules regarding handicapping and other regulations will be strictly enforced. Any shooter will be disqualified if scores on their cards are found to be incorrect.

Shooters will be classified on average and known ability as follows:

Singles	Doubles
97% and over . . . . . AA	93% and over . . . . . AA
94% and under 97% . . . . . A	89% and under 93% . . . . . A
91% and under 94% . . . . . B	85% and under 89% . . . . . B
88% and under 91% . . . . . C	78% and under 85% . . . . . C
Under 88% . . . . . D	Under 78% . . . . . D

### PETS

**Friends and Shooters! We love your pets don't get us wrong. Due to recent incidents please remember, 1. No Pets are allowed in club house. 2. Pick UP after your pets. 3. When exercising STAY AWAY from other Pets! 4. Always be in Control of your PET!!**

**REFUND for all options 10 or less entries**

**Juniors and Sub-Juniors may shoot "targets only" for \$24.00 per hundred and be eligible for trophies, but will be charged full price on all targets if any options are played.**

## GENERAL INFORMATION AND RULES

>ATA rules will govern all points not otherwise provided for herein. Interpretation of this program will be made by the board of directors and their decision will be final.

>This is an invitational tournament and we reserve the right to reject or refund any entry which in our judgement would be detrimental to this shoot. The Management reserves the right and authority to disqualify any contestant who handles his gun dangerously, and to remove contestant from further participation in any competition in which he may have entered.

>The Kansas Trapshooting Assn., Inc. or its staff will not be responsible for any accident or for any loss or property.

>No one, with exception of a referee, who is not an authorized scorer, will be permitted to score for anyone.

**SAFETY (ATA Rule Sec. 4, I10): All guns must have the action opened and contain no live or empty shells at any time, except while the shooter is on the firing line. A break open gun's action may be closed when it is in a gun rack but it shall not contain a**

**live or empty shell. Repeat offender(s) of these Rules will be given a 30 day suspension upon a second violation of these Rules; a third violation of these Rules will result in a 90 day suspension; and further violations will be reviewed by the Executive Committee for further disciplinary action.**

### WITHDRAWALS & RE-SQUADDING

No refunds will be made to a shooter for withdrawal or scratching from an event unless the event is cancelled. **If a shooter misses their squad, there will be a \$20.00 re-squadding fee. NO EXCEPTIONS.**

### WATCH FOR YOUR SQUAD

The first event of the day will start at the time listed. Be on the grounds ahead of the time and watch for your squad. Your squad cannot wait more than three minutes for you to take your place. If you are not there within the allotted time, your name will be scratched and your squad will proceed without you. You will not be paged.

### CHECK YOUR SCORE

Watch your score—it cannot be changed after leaving shooting post. The official referee assigned to each trap is there to see that your proper score is recorded. In the absence of a separate referee the official scorer becomes both referee and scorer. Call any discrepancy to their attention immediately. Refer to ATA Official Trapshooting Rules Book. The referee's decision is final.

### AMMUNITION

A Contestant cannot use:  
Any load other than lead shot. This includes tracers, copper and nickel coated shot.  
Any load with a velocity greater than 1290 fps with maximum shot charge of 1 1/8 ounces (31.89 grams), or 1325 fps with a maximum shot charge of 1 ounce (28.30 grams), or 1350 fps with a maximum shot charge of 7/8 ounce (24.80 grams), as measured in any individual shotshell. These velocities are maximum and no individual shotshell shall exceed these limits for the designated shot charge. In addition, no load containing more than 1 1/8 ounces (31.89 grams) or any shot larger than No 7.5 (7 1/2) can be used. A contestant may furnish his own shells if he so desires.

**Empties on the ground are the property of the KTA.**

### CHALLENGE AND PROTEST

A contestant may challenge the load of any other contestant. On receipt of a challenge the Management shall obtain a cartridge from the challenged, and if after examination, the Management finds the contestant violated the rule, he or she may be disqualified, accordingly, if the offense was willfully committed or otherwise.

### CAMPERS AND EXHIBITORS

Electrical hookups in the lot east of the clubhouse are available for campers and vendors. A \$35.00 camping fee per day will be required payable at the cashier's window. Please be sure your electrical cords are heavy enough to carry sufficient current. Please do not sell from vehicles in the driveways. Call Sandra McAllister for vendor reservations: Cell: 620-546-3519.

Shower house will be open during all shoots.

The management MUST disqualify any shooter with alcoholic beverages on the firing line.

Food will be served at the Club House.

The KTA will give a pin to any shooter breaking 100 straight in a 100 target event (no carry overs) for the first time on these grounds.

### Camper & Vendor Accommodations, contact:

Sandra McAllister • Cell: 620-546-3519

### KTA Directors

**Central Zone:** Clark Thrasher, Mark Russell, Fred Smith, Mike Simons  
**Eastern Zone:** Jim Kuhn Jesse Secrest, Kevin Maloan, Dakota Clark  
**Western Zone:** Carey McAllister, Caleb Fischer, Shawn Massey, Roy Rathbun

**Youth Director:** Jesse Secrest

**Tournament Director:** Jim Moody  
**Target Setting:** Clint Watson

### Gun Club Directory - 2021

Anthony Gun Club----- Sid Burkholder  
592 NW 140th Rd., Harper, KS 67058

Cedar Hill Gun Club ----- Mary Watson - (785) 843-8213  
918 E. 1650 Rd., Baldwin, KS 66006

Dodge City Gun Club----- Jim Byrum - (620) 225-3298  
2705 Westview, Dodge City, KS 67801

Fairgrounds Trap club. . . . . Dennis L Harris 913-522-8622  
13700 Polfer Road., Kansas City, KS 66109

Garden City Trap Club----- Beccy Landgraf - (620) 272-4970  
1609 A St, Garden City, KS 6784

Geary Co. Fish & Game Club----- (785) 238-8727  
Contact: Shirley Allen - (785) 375-7305  
Box 631, K244 Spur, Junction City, KS 66441

Hays City Sportsman's Club----- Randy Davis- (785) 625-2085  
5780 230th Ave., Hays, KS 67601

Hill Top Trap Park, Inc. ----- George Dresie - (785) 825-4341  
725 E. Frisbie Way, Salina, KS 67401

Kansas Trapshooting Association - - - - - (316) 755-2933  
3432 E. 117th, Sedgwick, KS 67135

Kinsley Gun Club ----- Larry Skelton, Pres. - (620) 285-5074  
719 W 17th Street, Larned, KS 67550

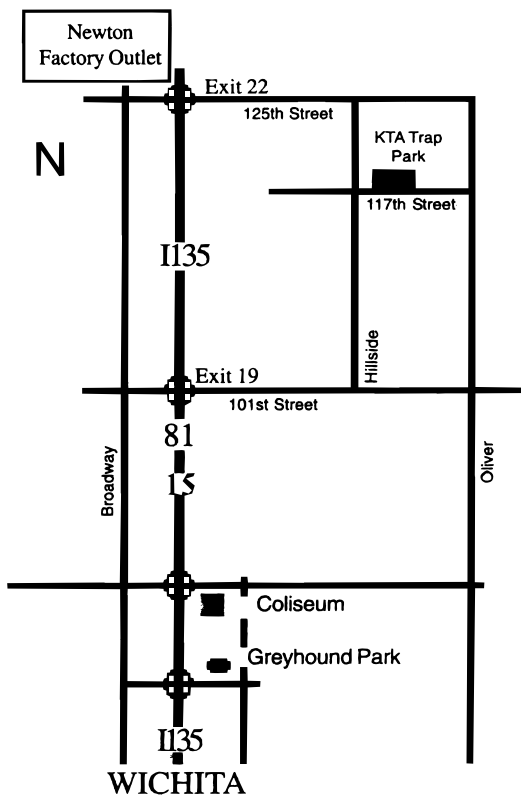
Liberal Gun Club ----- Greg Standard - (620) 629-5410  
Box 1733, Liberal, KS 67901

Lone Tree Gun Club ----- Josh Wrestler - (620) 228-0384  
2126 Idaho Rd, Humboldt, KS 66748

Tuttle Creek Shooting Park----- Rob Taylor - (785) 539-4392  
6364 Tuttle Creek Blvd.  
Manhattan, KS 66503

Ulysses Gun Club ----- Shawn Massey

**KTA TRAP PARK**  
3432 E 117TH ST N • SEDGWICK, KS 67135



For Information Contact

Rob Taylor, KTA President  
785-539-4392

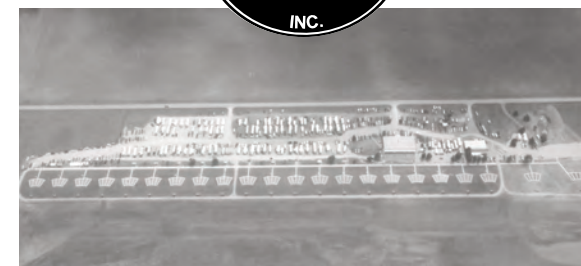
Gerald Mies, Vice President  
316-258-6154

Sandra McAllister, Secretary  
959 S.W. 10th Street  
Macksville, KS 67557  
620-546-3519 - Cell

Non-Profit Organization  
U.S. Postage Paid  
Manhattan, KS 66502  
Permit #79

KANSAS TRAPSHOOTING ASSOCIATION, INC.  
SANDRA McALLISTER  
959 S.W. 10TH STREET  
MACKSVILLE, KS 67557  
Gun Club Phone  
316-755-2933

Welcome To . . . .



~ The Premiere  
Shooting Facility  
in the Midwest ~

**KANSAS  
TRAPSHOOTING  
ASSOCIATION, INC.**

**THE KTA  
ALL ZONE  
SHOOT  
OCTOBER**

**1, 2, 3, 2021**

**KTA Website**  
[www.shootkta.com](http://www.shootkta.com)

**For KTA Trapshooting News,  
Shoot Dates, etc.  
[www.shootkta.com](http://www.shootkta.com)**

# The KTA ALL ZONE SHOOT

## OCTOBER 1, 2, 3, 2021

ATA Daily Fee of \$3.00 • KTA Fees of \$2.00 per 100 • Kansas Sales Tax of \$2.65 per 100

Welcome Shooters,

Zone shoots have always been important to the shooters of Kansas, this year and for the next two we will incorporate all 3 zones at one facility at one time.

Every zone will shoot for its own zone trophy provided by the KTA. This should be a great event for ALL the shooters of Kansas. Being on the same grounds, competing with the same conditions and testing your skill against ALL zone shooters at one time.

Trophies will be by zone, all monies, purses and options will be as normally split amongst all contestants. For our out of state friends we will have trophies for you as well.

Please plan on attending the 2nd "Kansas All Zone Shoot", you'll be glad you did..

Rob, KTA President

### FRIDAY - OCTOBER 1, 2021

Practice 10:00 am

Program 11:00 am

#### EVENT 1 - 100 SINGLES

Entry Fee (Targets & Shooter Service) .....\$35.35

- Options -

Lewis (3 classes 60/40) .....\$20.00

- KTA CASH -

AA, A, B, C, D

Champion: \$5 for each 3 entrants

Class winner: \$10 for each 3 class entrants

Category: \$5 for each 3 category entrants

(\$20 max)

(Lady Sub Junior Junior Vet Sr. Vet)

#### EVENT 2 - 100 SINGLES

Entry Fee (Targets & Shooter Service) .....\$35.35

- Options -

Lewis (3 classes 60/40) .....\$20.00

- KTA CASH -

AA, A, B, C, D

Champion: \$5 for each 3 entrants

Class winner: \$10 for each 3 class entrants

Category: \$5 for each 3 category entrants

(\$20 max)

(Lady Sub Junior Junior Vet Sr. Vet)

#### EVENT 3 - 100 DOUBLES

Entry Fee (Targets & Shooter Service) .....\$35.35

- Options -

Lewis (3 classes 60/40) .....\$20.00

- KTA CASH -

AA, A, B, C, D

Champion: \$5 for each 3 entrants

Class winner: \$10 for each 3 class entrants

Category: \$5 for each 3 category entrants

(\$20 max)

Lady Sub Junior Junior Vet Sr. Vet

#### OUT OF STATE TROPHIES

##### EVENTS 4 - 6 - 7

- KTA CASH -

Champion: \$5 for each 3 entrants

AA, A, B, C, D

19-21.5 ydg, 22-24.5 ydg, 25-27 ydg

Class winner/ Yardage: \$10 for each 3 class/ ydg entrants

Category: \$5 for each 3 category entrants (\$20 max)

Lady Sub Junior Junior

Veteran Sr. Vet

### SATURDAY - OCTOBER 2, 2021

Practice 8:00 am

Program 9:00 am

#### EVENT 4 - ZONE SINGLES CHAMPIONSHIP

Entry Fee (Targets & Shooter Service) .....\$70.70

- Options -

Lewis (3 classes 60/40) .....\$20.00

TROPHIES ALL ZONES

EAST CENTRAL WEST

CHAMPION

CLASS AA, A, B, C, D

Lady Sub Junior Junior Veteran Sr. Vet

#### EVENT 5 - PRELIMINARY HANDICAP

Entry Fee (Targets & Shooter Service) .....\$35.35

50-'S - \$5.00 PER 50 (1-2,2-3,3-4) 60/40 .....\$15.00

Yardage Purse (50-30-20%) .....\$20.00

9 Way Purse (Top 9 Scores Pay) .....\$20.00

Lewis (3 Classes 60/40) .....\$20.00

- KTA CASH -

Champion: \$5 for each 3 entrants

19-21.5 ydg 22-24.5 ydg 25-27 ydg

Yardage Winners: \$10 for each 3 entrants

Category: \$5 for each 3 category entrants

(\$20 max)

(Lady Sub Junior Junior Vet Sr. Vet)

### SUNDAY - OCTOBER 3, 2021

Practice 8:00 am

Program 9:00 am

#### EVENT 6 - ZONE DOUBLES CHAMPIONSHIP

Entry Fee (Targets & Shooter Service) .....\$35.35

- Options -

Lewis (3 classes 60/40) .....\$20.00

TROPHIES ALL ZONES

EAST CENTRAL WEST

CHAMPION

CLASS AA, A, B, C, D

Lady Sub Junior Junior

Veteran Sr. Vet

#### EVENT 7 - ZONE HANDICAP CHAMPIONSHIP

Entry Fee (Targets & Shooter Service) .....\$35.35

- Options -

50's - \$5.00 per 50 (1-2,2-3,3-4) 60/40 .....\$15.00

Yardage Purse (50-30-20%) .....\$20.00

9 Way Purse (Top 9 scores Pay) .....\$20.00

Lewis (3 classes 60/40) .....\$20.00

TROPHIES ALL ZONES

EAST CENTRAL WEST

CHAMPION

19-21.5 22-24.5 25-27

Lady Sub Junior Junior

Veteran Sr. Vet

HIGH ALL AROUND - 400 TARGETS